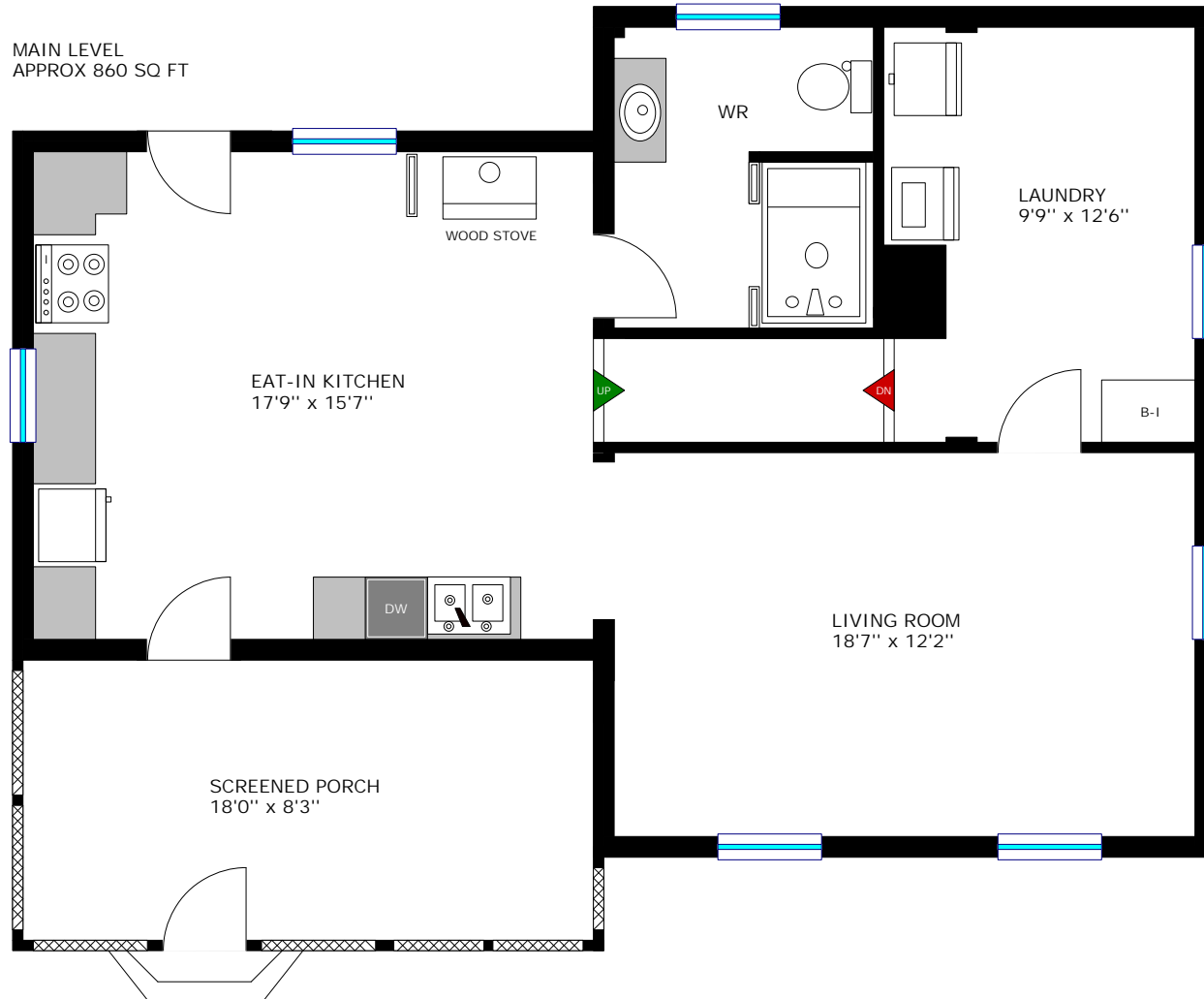


946 Sand Bay Road, Lansdowne

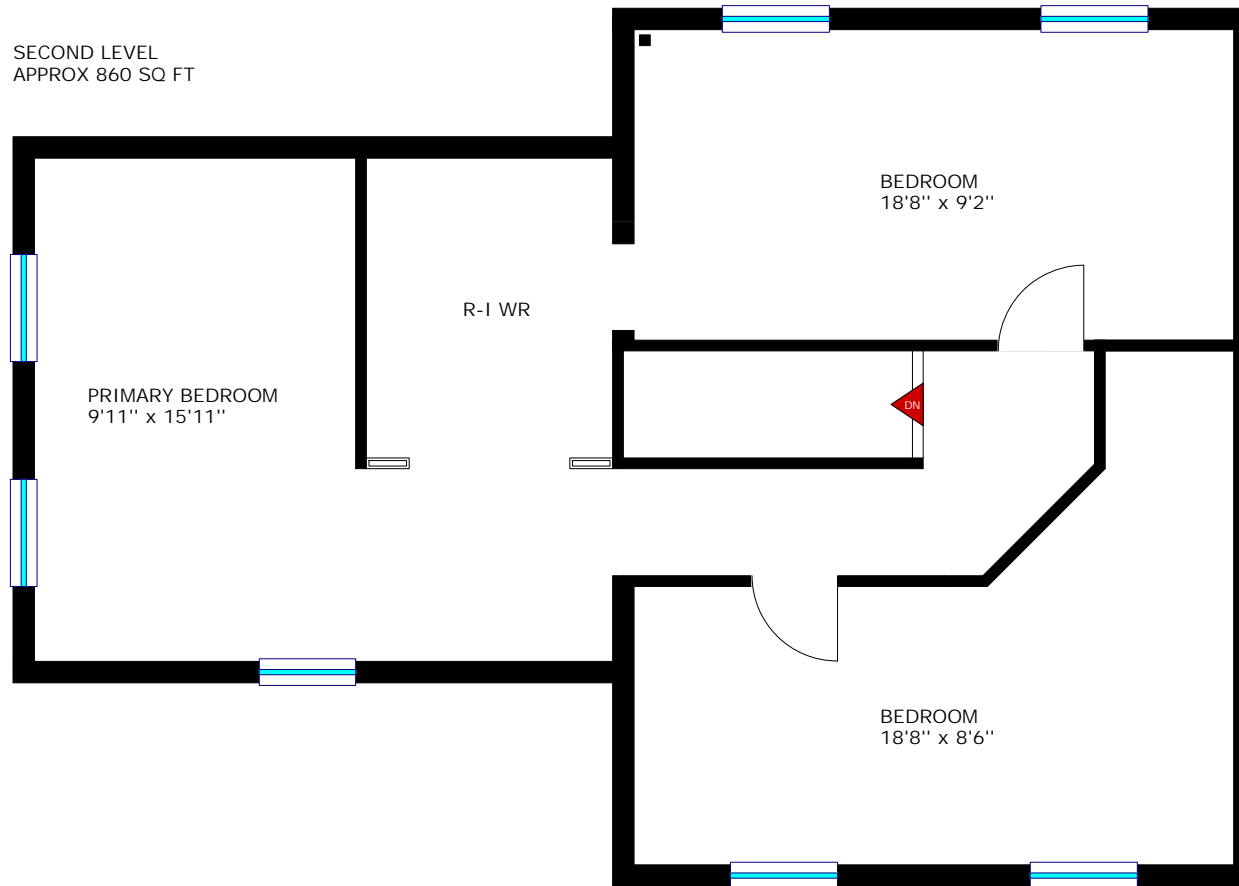
Last Revised: 2024-09-03
Page 1 of 3

Lexi MacDonald
Sales Representative



www.realtyservices.ca

Floor plan measurements and square footage are approximate, and drawings are for illustrative purposes only. We make no guarantee or warranty as to the accuracy and completeness of the floor plan. Please be sure to conduct an independent investigation of the property to determine the suitability for your space requirements.





Room Measurements

LEVEL	ROOM / AREA	IMPERIAL	METRIC (Metres)
MAIN	Living Room	18'7" x 12'2"	5.66 x 3.71
	Eat-In Kitchen	17'9" x 15'7"	5.41 x 4.75
	Laundry	9'9" x 12'6"	2.97 x 3.81
	3-Piece Bath	8'4" x 9'2"	2.54 x 2.79
	Screened Porch	18'0" x 8'3"	5.49 x 2.51
SECOND	Primary Bedroom	9'11" x 15'11"	3.02 x 4.85
	Rough-In Semi-Ensuite	7'7" x 9'2"	2.31 x 2.79
	Bedroom	18'8" x 9'2"	5.69 x 2.79
	Bedroom	18'8" x 8'6"	5.69 x 2.59

